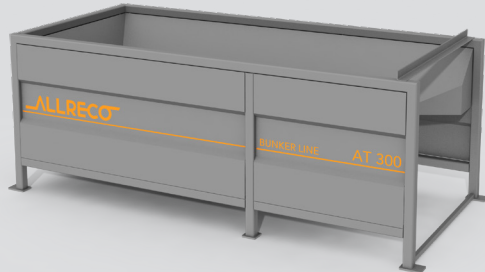


## AT 300

### TECHNICAL DATA



Weight	3.330 kg
Model	Hopper system with belt conveyor (especially suitable for free-flowing material)
Calculative volume	4,4 m <sup>3</sup>
Length	4.880 mm
Width	2.250 mm
Height	1.800 mm
Infeed height	1.800 mm
Discharge flange width	0,55 kW
Drive power	7,5 - 22 kW

The technical data are approximate and depends on the machine equipment  
(subject to change without notice).

### Applications

The wide range of bunker varieties allows the use for many materials, such as waste wood, green waste, compost, sand, soil, gravel, household waste, residual waste, commercial waste, mixed construction waste, as well as already processed recyclables or intermediates



### All advantages at a glance

ALLRECO can rely on a wide range of bunker types and sizes. Our portfolio includes moving floor systems, belt and chain belt systems as well as solutions with steel plate conveyor.

Optional adjustable dosing rollers, which can be equipped with different paddles, generate a particularly constant material discharge. Truck accessibility systems as well as installation variants and customer-specific solutions complete the range.

We can always offer you the right bunker for your specific application.